

Swackhamer-Dufford Genealogical Society  
16429 Yeoho Road  
Sparks, Maryland 21152-9553  
Website: [www.geocities.com/swackduff/](http://www.geocities.com/swackduff/)

### Thank You

Shelley Heretyk, officers and members of the Washington Township Historical Society for researching and developing the special Swackhamer-Dufford display.

Margaret Nordstrom, Virginia Allen and Paul and Kathy Krylowski for plats and history of the Middle Valley Cemetery.

Pastor Peter Froehle for sharing the history of the Old Stone Union Church and explaining its historic significance.

Carol Martyniuk for stepping forward to be the tour leader and sharing her knowledge of the Dufford farm.

## Swackhamer-Dufford Genealogical Society Reunion

1:30 p.m. Depart from the Raritan Inn via school bus

1:40 p.m. Stop at George Steven Dufford farm, Washington Township, NJ

### LOCAL HISTORY TOUR

1:50 p.m. Arrive at Middle Valley Cemetery, Beacon Hill Road

3:15 p.m. Depart Middle Valley Cemetery for Old Union Stone Church and Washington Township Museum.

3:10 p.m. Depart museum for Raritan Inn  
winning poems at Raritan Inn

3:30 p.m. Dedication of sculpture and reading of

Your tour leader is Carol Martyniuk, Secretary of the Swackhamer-Dufford Genealogical Society. She is the daughter of Arthur and Harp Mac... Her mother is former... 2-D Society.

### Raritan Inn, Califon, NJ

July 28, 2007

The school bus is operated by First Student Company of Glen Gardner, New Jersey.



## Tour Itinerary

- 1:30 p.m. Depart from the Raritan Inn via school bus
- 1:40 p.m. Stop at George Steven Dufford farm, site of early Dufford family reunions
- 1:50 p.m. Arrive at Middle Valley Cemetery, Beacon Hill Road
- 2:15 p.m. Depart Middle Valley Cemetery for Old Union Stone Church and Washington Township Museum
- 3:10 p.m. Depart museum for Raritan Inn
- 3:30 p.m. Dedication of sculpture and reading of winning poems at Raritan Inn

Your tour leader is Carol Martyniuk, Secretary of the Swackhamer-Dufford Genealogical Society. She is the daughter of Audrey and Herb McCaffrey and a Dufford descendant. Her mother is former President of the S-D Society.

The school bus is operated by First Student Company of Glen Gardner, New Jersey.

## Stop 1

The George Steven Dufford farm at 411 West Mill Road (now Hawthorne Hill Dressage, and also known as the Mary Trimmer House) was the site of annual Dufford family picnics from 1932 to WW II. Both Jane (Swackhamer) Saums and Russell Dufford, Jr., S-D Society members and attendees at today's program, recall those days. Ask them about those early picnics.

George Dufford (1794-1864) acquired the property and several hundred acres in 1853. He was the grandson of George Steven Dufford (1741-1817) and Mary Ann Trimmer (1743-1826). This George was a grandson of pioneer settler Philip Dufford.

The property became the summer home of George Steven Dufford (1864-1945) and his wife Harriet Swackhamer Dufford and remained in the family into the 1960s. In 1998 John and Bonnie Lundberg (current owners) acquired the property, moved, renovated and added to the house.



## Stop 2

### Middle Valley Cemetery Beacon Hill Road

Your hosts at this stop are Philip Swackhamer (1816-1876) portrayed by Scott Swackhamer of Macungie, PA, and Elizabeth Swackhamer (1817-1884), Philip's wife, portrayed by Sharon Swackhamer of Sparks, MD.

This cemetery is the final resting place of many prominent Middle Valley residents including Trimmers, Duffords, Apgars, Elizabeth "the consort" of Jacob Dufford and is the site of the 1941 monument to Samuel Swackhamer. (see the fold out plat map)

Scott Swackhamer is an amateur actor who has performed in Huffs Church, PA UCC Church's annual "Deutsch" and Passion plays. Sharon, Scott's real-life mother, does not profess to be an actress at all but can relate to the life of a farm wife of the 1860s.

## Stop 3

### Old Stone Union Church

Originally built of logs in 1747 the Union Church was constructed of stone on land donated by the Weise family in 1774. The Reverend Gotthilf Heinrich Ernst Muhlenberg was pastor when the stone church was built. The oldest tombstone of the cemetery surrounding the stone ruins dates to 1765, but other graves were left unmarked. A list of all known burials is available.

The stone structure remained a "Union" church serving both Lutheran and Dutch Reformed (Presbyterian) congregations until 1832 when separate churches were built in Long Valley.

Our host at this stop is Peter Froehlke pastor since 1993 of Zion Lutheran Church, 11 Schooley's Mountain Road. Zion is the surviving Lutheran Church, and location of many recent S-D Society reunion meetings.



## Stop 4

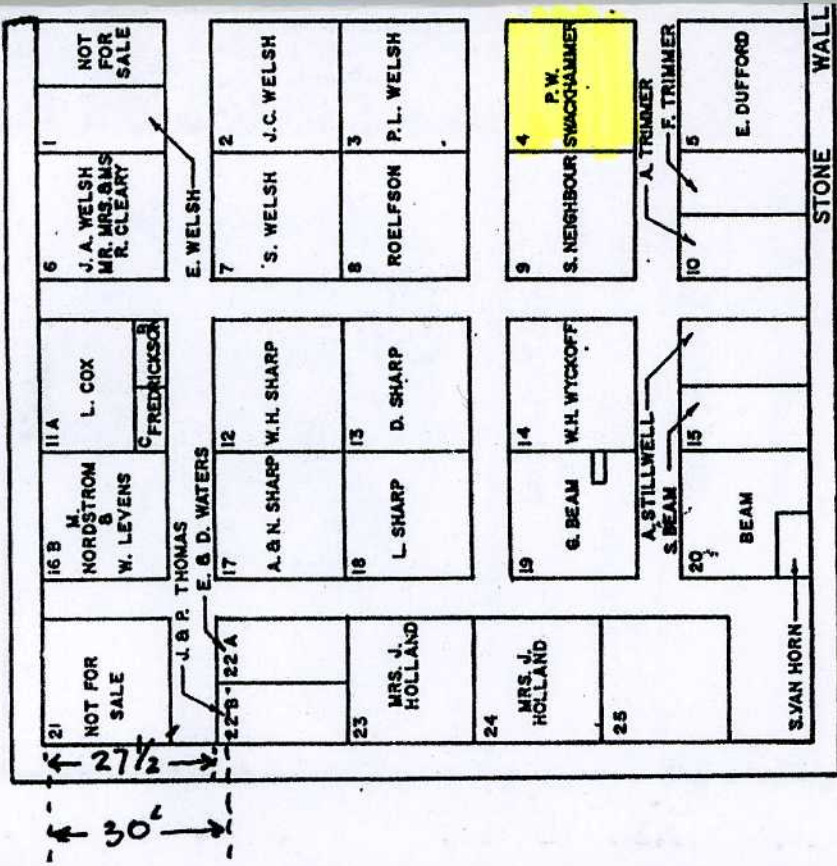
### Washington Township Historical Society Museum

The Washington Township Historical Society was established in 1960. The Society's museum, which opened in 1981, is in an 1830 stone school at 6 Fairview Avenue, Long Valley, and adjacent to the Old Union Stone Church.

Shelley Heretyk, President, of the Society is your host at this stop. She has served in many officer and volunteer positions since joining the Society in 1998. Her professional business career has been with AT&T.

A special exhibit for our visit today and the 275<sup>th</sup> anniversary of Samuel Swackhamer's settlement in German Valley, has been assembled. Over 75 items involving the Swackhamer and Dufford families are on display.

B



MI

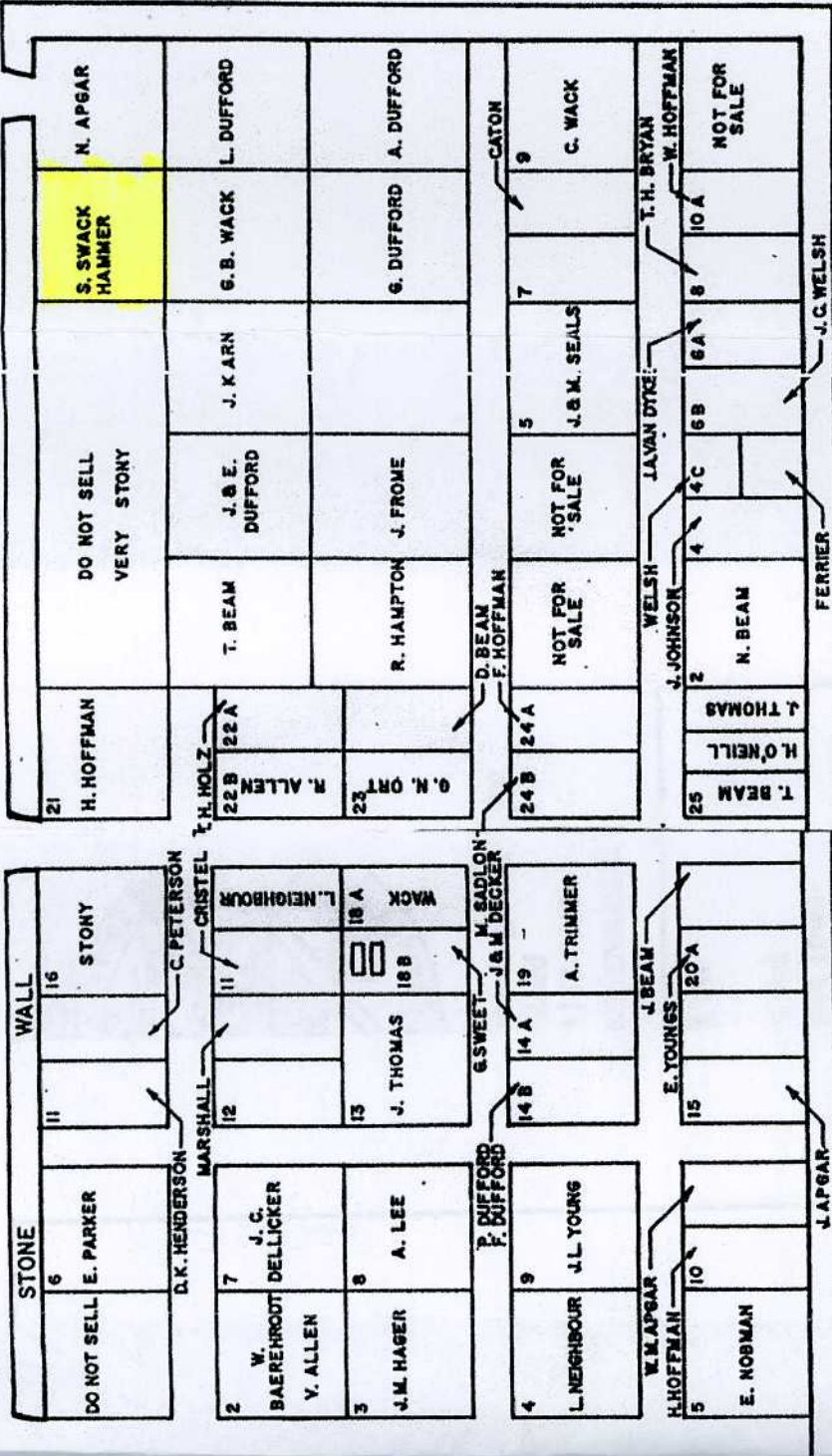


EACON

HILL

ROAD

*Beacon*



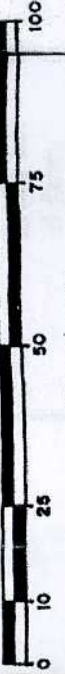
PLOT PLAN  
OF

DDLE VALLEY CEMETERY ASSOCIATION

IN

WASHINGTON TOWNSHIP, MORRIS COUNTY  
NEW JERSEY

SCALE:  $\frac{1}{4}$ " = 10'



JULY 9, 1992

PREPARED BY: B. R. SADLON NJPLS NF 35872

*pg 76 of 8*

knowledge of the Dufford family  
 be the tour leader and sharing her  
 Carol Marzwick for stepping forward to  
 and explaining its historic significance.  
 history of the Old Stone Union Church  
 Pastor Peter Proehlke for sharing the  
 history of the Middle Valley Cemetery.  
 Margaret Northman, Virginia Allen and  
 Dufford display  
 and developing the special Zwackhammer-  
 ship Historical Society for researching  
 members of the Washington Town-  
 Shelleys Historic officers and

**Thank You**

Website: [www.genealogy.com/~zwackham/](http://www.genealogy.com/~zwackham/)  
 Sparks, Maryland 21155-9223  
 1845a Yeopu Road  
 Zwackhammer-Dufford Genealogical Society



**Notes**

