

# SWACKHAMER-DUFFORD GENEALOGY SOCIETY



FOR THE DESCENDANTS OF SAMUEL SWACKHAMER (SCHWACHHAMMER) WHO IN 1732 SETTLED IN LONG VALLEY, NEW JERSEY AND PHILLIP DUFFORD (DUFORD) WHO SETTLED THERE IN 1738.

## WINTER 2016 BULLETIN

Dear Family and Friends:

In the transition to the 21<sup>st</sup> century some significant changes have been occurring. Organizations with great tradition and longevity are struggling to attract new members and to maintain programs. Veterans of recent conflicts are less interested in The American Legion than those of past conflicts. Service organizations such as Rotary and Lions Clubs are suffering declining memberships as are fraternal groups such as the Moose and Eagles. I recently saw a television advertisement for new Masonic Order members. Genealogy groups such as Palatines to America have chapters barely hanging on with officers in their mid-80's and declining numbers.

The Swackhamer-Dufford Genealogy Society has remained fairly constant in membership, service and annual reunion attendance for several years, but it too has an aging group of dedicated servants and membership. It would benefit from "new blood" and ideas. Answers to these growth and stability dilemmas are not obvious, but I firmly believe that the best strategy is to look ahead and not back, to embrace technology and not remain wed to old ways. Embracing change, new ideas and programs is scary for most people, but time lessens those anxieties.

A recent Wall Street Journal article on genealogy tells of a 14 year-old boy in Tennessee, who wanted to know more about his family origins. Those around him didn't share his interest, so he organized and delivered a family reunion to which more than 100 people attended. It was a remarkable accomplishment for one so young and it is rare among genealogy enthusiasts.

At both the 2015 and 2016 reunions we included a segment on youth engagement. We had a youth on the 2012 program to give his impressions on visiting the Swackhamer ancestral home of Altusheim, Germany. Our web site coordinators are recent college graduates. Grandparents have brought grandchildren to the annual reunion. One year we had a youth category of poetry writing, which didn't require reunion attendance. Youth may pursue a scout family history merit badge or a 4-H Ancestry project can lead to a life-time of discoveries. Encouraging youth is not by itself the answer, but every effort makes some difference.

I would like to see the S-D Society have a viable Face Book section with a credit card financial support option. I would like to see us support a book of family genealogy by country (Germany, Canada, USA) and states like NJ, NY, MI, OH, IN, MO, WA, CA etc. wherever clusters of Swackhamer or Dufford ancestors are or have been. Ideas are endless. Who would like to work on such an idea?

Sincerely yours,

Gene L. Swackhamer, President

## Officers of the Combined Societies

**Gene L. Swackhamer**  
President  
Swackhamer Family Historian  
16429 Yeoho Road  
Sparks, MD 21152  
[GGSwack@cs.com](mailto:GGSwack@cs.com)

**Robert Lee Swackhamer**  
Vice President & Treasurer  
1284 Linda Drive  
Toms River, NJ 08753  
[bobnjeanswackhamer@hotmail.com](mailto:bobnjeanswackhamer@hotmail.com)

**William (Bill) Cramer (D)**  
Vice President  
Dufford Family Historian  
47 Franklin Place  
Morris Plains, NJ 07950  
[Bcj1226@optonline.net](mailto:Bcj1226@optonline.net)

**Jill Drees (S)**  
Membership Coordinator

**Gloria Muir (S)**  
Canadian Representative  
Woodstock, Ontario  
519-475-4891  
[gmuir\\_1@yahoo.ca](mailto:gmuir_1@yahoo.ca)

**Carol Martyniuk (D)**  
Bulletin Reporter  
[cmartyniuk@gmail.com](mailto:cmartyniuk@gmail.com)

**Matthew Martyniuk (D)**  
E-Bulletin Webmaster &  
Asst. Dufford Family Historian  
[martyniuk@gmail.com](mailto:martyniuk@gmail.com)

**Bryan Swackhamer**  
Asst. E-Bulletin Webmaster  
[bryan.swackhamer@gmail.com](mailto:bryan.swackhamer@gmail.com)

**Steffen Drees (S)**  
Aus dem Englischen  
Bulletin Translator to German  
[s.drees@gmx.net](mailto:s.drees@gmx.net)

**Bonnie Wilson (D)**  
Bulletin Reporter &  
Outreach  
[rwilson578@cfl.rr.com](mailto:rwilson578@cfl.rr.com)

**Steve Jones (S & D)**  
Bulletin Reporter  
[steve@jones88.net](mailto:steve@jones88.net)

**Shelley Heretyk (F)**  
Bulletin Editor  
29 Douglas Drive  
Long Valley, NJ 07853  
[sheretyk@comcast.net](mailto:sheretyk@comcast.net)

### Swackhamer-Dufford Genealogy Society Website [www.rootsweb.ancestry.com/~njswdugs/](http://www.rootsweb.ancestry.com/~njswdugs/)

Current and past Bulletins are located here. Put your comments or questions in the "Guest Book". The site is monitored and you will get a response.

Throughout the Bulletin, (D) represents a Dufford connection, (S) for Swackhamer, (S&D) both families, and (F) for friend of the Society.

## Communications with Members and Friends

**Patricia (Trish) Lynn Lucy Cramer** married **Steven Louis Liam Serafin** on May 7, 2016 at St. Anthony's Roman Catholic Church, Hawthorne, NJ. Trish is the great granddaughter of Lena Marilda Dufford Trimmer; the 9<sup>th</sup> generation descendant of Hans Phillip Dufford who arrived in 1738 and settled in what is now Long Valley, NJ; the 9<sup>th</sup> generation descendant of John Trimmer who arrived in 1738 and whose descendants settled in what is now Hackettstown, NJ; and the 11<sup>th</sup> generation descendant of Annie Marie Cramerin who arrived in 1710 and whose descendants settled in what is now Allamuchy, NJ. Her husband, Steven, is of Irish, German and Polish ancestry. Congratulations Steve and Trish!

## Necrology

**Audrey T. McCaffrey (nee Wert)**, 86, passed away at her daughter's home, after a long illness, on July 12, 2016. A Mass of Christian Burial was held at Corpus Christi Church, 234 Southern Blvd., Chatham, N.J. Interment was at St. Vincent Martyr Cemetery, Madison, N.J.

Born in Brooklyn, N.Y., to Alden M. and Grace (Cappy) Wert, Audrey lived in Hawthorne, N.Y.; Madison, N.J.; Forked River, N.J.; Spring Hill, Fla., and Pompton Plains, N.J. She was a graduate of Bay Ridge High School (secretarial program), and worked as an executive secretary at N.Y. Telephone Co., Westchester Community College, Westchester County Department of Environmental Facilities, The Geraldine R. Dodge Foundation, and AT&T.

Audrey was active in the Swackhamer-Dufford Genealogy Society for decades serving as President from 1992 to 2003, Secretary, and Bulletin Editor. She was a Eucharistic minister, lector, and Rosary Altar Society member at various parishes and was a member of the Timber Tones in Spring Hill, Fla., the Lackawanna Power Squadron, the U.S. Coast Guard Auxiliary, and the Thursday Morning Club in Madison, N.J.

Audrey was predeceased by her husband of 57 years, Herbert F. McCaffrey; two brothers, Alden and George Wert; two sisters, Martha Sammond and Grace Powell, and her beloved niece and nephews, Martha Degenhardt, Donald Smith, and Craig Wert. She was the devoted mother of Carol Ann Martyniuk (Peter), of Vernon, N.J.; Keith McCaffrey (Jeanette) of Edgewater, Md.; Eileen Corritori (Dan) of Long Valley, N.J.; Kenneth McCaffrey (Noreen), of Chatham, and Kerri McCaffrey of Chester, N.J. She was the loving grandmother of Matthew, Christie, and Michael Martyniuk; Kathleen, Erin, and Kevin Corritori; Kyle and Ryan McCaffrey; Kara, Neil, and Leigh McCaffrey, and Connor and Colin Manning. She was the great-grandmother of Nova Selene Martyniuk, and Nina Ann Annunziato.

## Necrology (continued)

**Joan L. Chiu (F)**, 54, of Bangor, PA, passed away Sunday, October 16, 2016 at home. Joan was a S-D Society friend and a driving force behind the restoration of the Lambert Swackhamer (Bethel Church) cemetery, which the S-D Society has supported. She attended the July 2016 reunion and gave a progress report on the restoration project.

Joan was born in Stillwater, NJ, and was the daughter of Howard Lacey and the late Mildred (Ellicks) Lacey. In addition to her husband, Jeff, Joan is survived by a son James and wife, Amber, of South Jersey; daughter Heather Marangolo and husband, Salvatore, of Lower Nazareth Twp, PA; sister Jean Takacs and husband, Steve, of Stewartsville, PA, Betty and Cathy; grandchildren Reagan, Noah and Cole.

Anyone desiring to support the restoration project in memory of Joan Chiu may contribute to the Bethel Restoration Fund at Mount Amwell Project, 97 Bissell Road, Lebanon, NJ 08833. Contributions are tax deductible.



## Donations to the Society (June 1, 2016 through October 20, 2016)

The following donors have made contributions since the summer 2016 *Bulletin*. Donations include in-kind gifts, contributions from solicitation envelopes, from a portion of the purchase price of Nancy Schane's book, *Voyage of the Love and Unity*, and from Gene Swackhamer's book, *The Emigration of Samuel Swackhamer*. If we missed recognizing your gift, please forgive us. We truly appreciate every dollar received; your voluntary gifts have sustained the Society since 1951. Family symbols included below if known are (D) for Dufford, (F) for friend of the Society and (S) for Swackhamer.

Mrs. George Alpaugh (NJ), a donation for *Bulletin* production in memory of Grandma Dufford Trimmer.

Patricia Barber (F) (NJ), a donation with reunion registration.

Joan and Jeffrey Chiu (F) (PA), a donation with reunion registration.

William (Bill) Cramer (D, et al) (NJ), a donation through reunion registration.

Dawn Dufford (WA), donation for *Bulletin* production in memory of Philip A. Dufford.

Frank and Lori Dufford (NY), a donation for *Bulletins*, operations and reunion programs in memory of Russell (Jack) Dufford.

Stefan F. Firtko (F) (PA), a donation through reunion registration.

Ellen E. Freeman (D) (NH), a donation for Society operation in memory of Stan Dufford, her father.

Laurin L. Henry (VA), a donation for Society operation.

Mary Ann Kordys (F) (NJ), a donation through reunion registration.

Vivian and Amanda Logan (S/D) (NJ), a donation through reunion registration.

Mrs. J. E. MacRae (S) (ON, Canada), a donation for *Bulletins* and general operations in memory of Arthur C. Swackhamer of Acton, Ontario, her grandfather.

Phyllis Demuth Movius (MT), a generous gift for operating the Society.

Elizabeth (Betty) Nagle (F) (NJ), a donation through reunion registration and *Love and Unity* and *The Immigration of Samuel ...* book purchases.

Joy Newell (NY), a donation for operation of the Society.

Jean M. Sheppard (TX), a donation for *Bulletin* production in memory of Harold Apgar Dufford.

Adelia Swackhamer (PA), donation for operation in memory of Charles Webster Swackhamer.

G. H. Swackhamer (OH), a donation for operation of the Society.

Gene and Sharon Swackhamer (MD), a gift of postage to mail the summer 2016 *Bulletins* and a portion of the July 30 reunion registration.

Sophie C. Swackhamer (NJ), a gift to the operating fund in memory of David H. Swackhamer.

Thelma Swackhamer (PA), a donation for Society operation in memory of Merlyn Swackhamer.

Clyde Verbryck (NY), a gift for Society operation in memory of Karen Verbryck.

Dr. Richard and Sheri Zingmark (SC), a gift for Society operation.

**CONTINUOUS DUFFORD RESEARCH PROJECT**  
**by William Cramer**

Hello descendants of Philip Dufford. This ongoing project is an attempt to update and inform the descendants of the Dufford/Du Ford/Tufford/ Teaford family tree.

In this bulletin we have a VERY SPECIAL CONTRIBUTION BY our very own **Donn Dufford**. **AUTHOR'S NOTE (from Donn):** Donn Dufford has been a professional Family Historian for some 30 years. He has done extensive research on the Dufford family in the U.S., France, Germany, and England. Donn has proven that the Duffords originally came from England, immigrated to Southern France during the 100 Year War, then to the Alsace region, and were French citizens (not Germans) when they immigrated to America. Being from the Alsace, they spoke an Alsatian dialect, and could understand both the French and German languages. Donn also has proven, through church and civil records, that the spelling of the family name was Duffort for at least two and probably three generations before they came to America. It became "Dufford" around the Revolutionary War. The rumor that their ship, the Robert and Alice (not Robert and Oliver) was blown off course while headed to New York, has been proven incorrect. All ships in 1738 were always bound for Philadelphia, having originally sailed from Rotterdam. Donn is a member of and regularly visits the Washington Township Historical Society.

ENJOY Donn's pictures and captions. THANK YOU DONN!



**Langensoultzbach**

Donn Dufford of Pasadena CA journeyed to Langensoultzbach, France, where his ancestors came from. The Duffords were one of the first families to settle Long Valley and Middle Valley NJ in 1738. The family name in France was spelled Duffort and became Dufford during the Revolutionary War.



**Across the Valley**

Like Long Valley, New Jersey, Langensoultzbach sits in a fertile valley between two small mountain ranges. Langensoultzbach is a commune (village) in the Bas-Rhin Department (similar to our counties) in the Alsace-Champagne-Ardenne-Lorraine region (similar to a state) in northeastern France. The village (elevation about 680') is set in farmland, although most of the surrounding countryside is still made up of woodland.

The commune is part of the Palatinate Forest-North Vosges

Biosphere Reserve. This is an intergovernmental scientific program that aims to establish a scientific basis for the improvement of relationships between people and their environments. The Biosphere Reserve extends from France into Germany, along the Rhine River and is beautiful.





### Overlooking the Village

Donn and wife Nancy on the steps of the Presbyterian Church, overlooking part of the village and rolling farmland. The church was closed when Donn and Nancy visited. But being a small village where everyone knows and trusts one another, we found the mayor, who graciously gave us the key so we could go inside the church as well as a small museum attached to it. The museum was once a Catholic chapel that now houses artifacts dating to the 2<sup>nd</sup> Century when Langensultzbach was on an important Roman Empire trade route. Roman Legions were stationed there.



### Rue Principale

This is the main street of the village. Notice the lack of cars and people. There are no restaurants, no retail stores, no stop signs or signals, no crime, and one ATM. About 980 people live in the village and on surrounding farms. The village's oldest house dates back to 1557. Most are more than 200 years old.



### The Original Duffort House

Donn spent time in the Bas-Rhin Archives in Strasbourg, and was fortunate enough to discover a family will, a map, and civil and church records dating back to the 17<sup>th</sup> Century. With this, he was able to find the actual house the Duffort family lived in when they left France in February or March 1738 for America.

After six months, the loss of the mother, a daughter and a son, Patriarch Philip Duffort arrived in America September 11, 1738 aboard the ship Robert and Alice. With Philip were his sons Jacob (abt. 23), George (abt. 14), and Donn's direct ancestor, Adam (abt. 12); daughter

Anna Clara with her husband Stephan Durrenberger/Terryberry; and Stephan's brothers Michael and Jacob. The group met two other families during the voyage – the Nachbar/Neighbor/ Neighbors, and the Weiss/Weise/Wise's. Together, the four families made their way from Philadelphia to make a new home in Long Valley. (Donn is working on finding out how the families knew about Long Valley. It doesn't appear the Dufforts or Durrenbergers knew people there.)

**(Langensultzbach continued on page 6)**



## Langensoultzbach (continued from page 5)

The house is a typical “half-timber” home built during the 15<sup>th</sup> to 17<sup>th</sup> centuries in the Alsace region of France because of the plentiful trees in the surrounding forests. Langensoultzbach was invaded by the Germans during WWII (and WWI). You can see the difference between the top and bottom front of this house. The bottom was damaged by a German bomb as the retreating Nazis attempted to destroy everything, including a bridge in front of the house, as the Allies began their liberation following D-Day.



**The Duffort house is in an “L” shape** with living quarters on the left and back sides, and a huge barn on the right that now houses an array of large farm equipment.



### Inside of House

All the half-timber homes have beautiful wood beams in the ceilings and walls throughout.



A youngster plays in the horse trough in front of the Duffort's house. The trough is about 125 years old. Water from the Sultzbach River flows through it. The River runs between the Duffort house and an ancient mill the Dufforts may have owned. The river flows out of the mountains above the Village, which is about six miles from the German border, and less than 20 miles from the Rhine River.



## Memories of the House and Store of Frank Dufford

It was great to receive memories and photographs from **Jean (Dufford) Sheppard**, who lives in Texas, about the “House and Store of Frank Dufford” (see page 10 of the Summer 2016 Bulletin). Her father and mother, Harold and Jean Dufford, took her up to Middle Valley every summer as a child to spend time with her grandparents, Frank and Lillian Dufford. Jean spent many summer days in the house pictured in the bulletin. She remembers playing on the porch and in the old store after it closed. Frank and Lillian also had an apple orchard on their farm which was only a few miles up on West Mill Road. Jean and friends would put apples in bushel baskets and sell them from the front porch of the old store. Jean looked through her family photograph albums and sent the following pictures.

–Shelley Heretyk, Bulletin Editor

(continued on page 7)

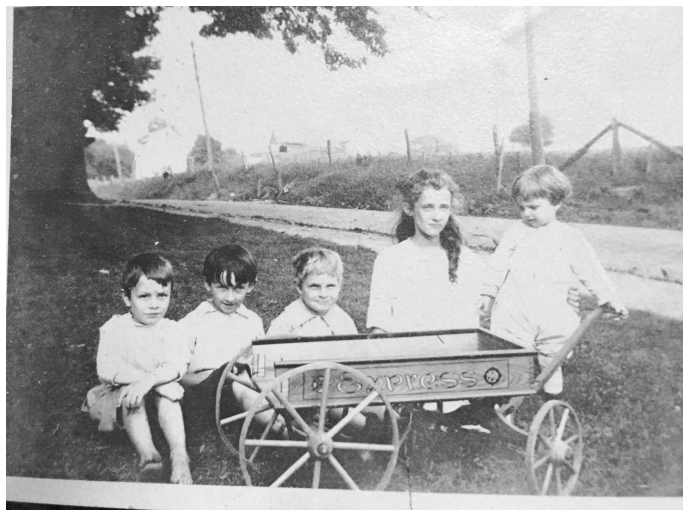
Memories of the House and Store of Frank Dufford (continued from page 6)



Left to right: Harold Dufford (Jean Sheppard's father), Frank Dufford (her grandfather), and Lillian Dufford (her grandmother) at their house in Middle Valley. (circa mid 1920s)



Frank and Lillian Dufford's home on West Mill Road. Frank Dufford was born here in 1872.



Harold Dufford (in the middle) at the family home in 1914.



The farm house on West Mill Road - about 1 mile from the main house.



Pictured left are Jean Sheppard's parents, Harold and Jean Dufford, at the old store. (circa early 1930s)

Pictured right is Frank Dufford at the old store. (circa early 1900s)



## Summary of the 70<sup>th</sup> Swackhamer-Dufford Genealogy Society Annual Reunion, Zion Lutheran Church, Long Valley, NJ

Following a week of brutally hot weather, those gathering for the meeting really appreciated the air conditioned comfort of Zion's still new educational building, which was designed to encase an existing Swackhamer house on Schooley's Mountain Road adjacent to the Church. Our two new Zion sponsors, **Charlie Davidson** and **Helga Schwartz**, also attended the meeting. Their help was wonderful.

Seventeen were present for the meeting including the **Franz Drees** family from Altlusheim, Germany, who discussed life and customs of the past and present in the home village of Samuel Swackhamer. **Irmtraud Drees'** mother was a **Schwechheimer (Swackhamer)**.

Upon arrival small groups were immediately into discussions of documents, maps, photos, and connections as they enjoyed another of **Sharon Swackhamer's** catered breakfasts of fruits, pastries, coffee and teas. Helga Schwartz was speaking German with the Drees. **Bill Cramer** was receiving stacks of new Dufford information and newcomers were instant friends.

**Gene Swackhamer**, opened the meeting with a welcome, introductions and moment of remembrance of former President, Audrey McCaffrey, who died earlier in July. She served as president from 1992 to 2003. Bill Cramer gave a presentation on how and where to find the names and information of deceased family members. Gene followed with a presentation on the "patience and persistence" needed in assembling family history and tips for achieving success. The morning concluded with a panel of **Bill Cramer, Steve Firtko** and **Jill Drees** discussing ways to encourage younger family members to pursue the hobby of collecting family history. Many thoughts focused on using Facebook and other technologies.

We again enjoyed a gourmet luncheon of a shrimp and pasta salad, traditional PA corn relish, German potato salad, many other accoutrements and wonderful desserts. **Vivian Logan** was overheard saying, "This is why I come!"

Following lunch a short business meeting re-elected officers with a few changes. **Jill Drees** will be Membership Coordinator and **Carol Martyniuk** will be a reporter. A Treasurer's report for 2016 was distributed and accepted. **Vivian Logan** (a young 86) again captured the honor of being the oldest person present with another birthday next month. **Celina Drees** (13) was the youngest present and her family from Altlusheim came the furthest distance, probably a record that will stand for some time. The Society will again make a \$150 donation each to Zion Church, The Washington Township Historical Society (WTHS), The Old Swack Church Fund and to Middle Valley Cemetery Association, where many Duffords and Swackhamers are buried.

**Joan Chiu** and **Pat Barber** gave an update on their efforts to save the Mt. Bethel Church (Old Swack Church) foundation and cemetery. **Charlie Davidson**, our Zion sponsor, reported that he once was a member of one of **Reverend Lambert Swackhamer's** New York churches. The Old Swack Church recovery group would like to hear from anyone that has information on "Stuttering" **Jake Swackhamer**, who built the original stone church in one year.

A tour of the WTHS Museum with **Mary Ann Kordys** and a surprise cloud burst of rain concluded our busy, but enjoyable day. The 2017 gathering will be held at Zion in Long Valley on Saturday, July 29.



**Items are needed for the Summer 2017 Bulletin!**  
**Please send material to Shelley Heretyk, Bulletin Editor, by April 15<sup>th</sup>.**  
**See page 2 for contact information.**



## Scenes from the 2016 Swackhamer-Dufford Annual Reunion



### Samuel Schwechheimer's Homestead

Left to right are Irmtraud Drees, Franz Drees, and Gene Swackhamer in Samuel Schwechheimer's homestead. He built his one-room house of stone around 1732 in Long Valley. It has been restored and is located below the first floor of the Raritan Inn.



### Sculpture at the Raritan Inn

Franz Drees, Irmtraud Drees, and Gene Swackhamer are standing in front of the sculpture, named *Tulip*, at the Raritan Inn (shown in the background). This kinetic wind sculpture, by Lyman Whitaker of Utah, was dedicated at the Swackhamer-Dufford Genealogy Society Annual Reunion in 2007 to commemorate the 275<sup>th</sup> anniversary of the settlement of Samuel Swackhamer (1732– 2007).

The same sculpture is also located in Altlusheim, Germany, Samuel Schwechheimer's homeland. In 2010, Sharon and Gene Swackhamer presented it to the city on behalf of the Swackhamer-Dufford Genealogy Society.



### 70<sup>th</sup> Annual Reunion Attendees

**Standing L to R: Gene Swackhamer, Joan Chiu, Vivian Logan, Pat Barber, Mary Ann Kordys, Elizabeth Nagle, Steffen Drees, Celina Drees, Helga Schwartz, Franz Drees, Irmtraud Drees.**

**Seated L to R: Bill Cramer, Jill (Swackhamer) Drees, Stefan F. Firtko**

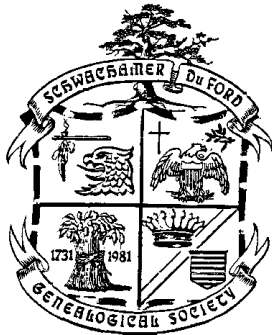
**Pictured left are Sharon Swackhamer and Joan Chiu.**

**Not shown: Amanda Logan and Charlie Davidson**





Swackhamer-Dufford Genealogy Society  
16429 Yeoho Road  
Sparks, MD 21152



Winter 2016 Bulletin  
[www.rootsweb.ancestry.com/~njswdugs/](http://www.rootsweb.ancestry.com/~njswdugs/)

## **Contents of this Issue**

**Communications with Members and Friends**

**Necrology**

**Donations to the Society**

**Continuous Dufford Research Project: Journey to Langensoultzbach**

**Memories of the House and Store of Frank Dufford**

**70<sup>th</sup> Swackhamer-Dufford Annual Reunion Summary**